



# General Assembly

**Sunday, April 29, 2007 at 19h00**

Conservation and Research Laboratory - MPE

541, de la Congrégation street, Montréal

**To all members:**

**The Annual General Assembly for members of the Museum will take place on Sunday April 29-07 at 19h00, at the Conservation and Research Laboratory, at the above address.**

**The Museum of Palaeontology and Evolution would like to thank you for your moral and financial support by inviting you to visit the laboratory before the meeting. You will have the opportunity to witness the progress made in cataloguing and conserving the collection. In addition, we will be offering light refreshments to our visitors!**

---

## A surprise visit to the Laboratory

On Friday, March 16-07, Mr Thierry St-Cyr, the local Bloc Quebecoise member of Parliament for the constituency of Jeanne-Le Ber, paid a surprise visit to the laboratory following an invitation sent to him less than a week before! Mr St-Cyr and his team were surprised to learn about the existence of our organisation within their constituency. This brief visit gave him the opportunity to appreciate the effort and achievements of our members from the time the Museum was founded. He had nothing but praise for the for the quality of the installation, the seriousness of

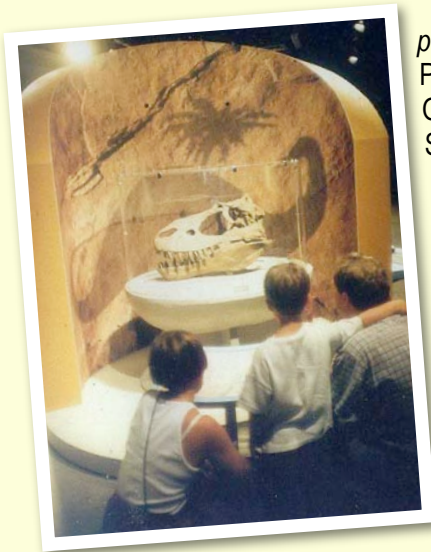
the organisation, the content of our collection and our perseverance in continuing with our work despite virtually a complete lack of official financial support.

Michel Chartier and Mario Cournoyer explained to Mr St-Cyr that they would like to see the MPE set up with a permanent home in this area. They suggested that a location close to the Lachine Canal, which is under development as a recreational and tourist area, would be an ideal location. At this point Mr St-Cyr offered help in trying to source a Federal grant to support the development of a Business Plan and Feasibility study for the Museum.

The meeting with Mr St-Cyr was a great success and hopefully will be the beginning of a fruitful collaboration.



### Travelling exhibition: *Dinosaurs and Company*



Latest news regarding the travelling exhibition, *Dinosaurs and Company*, which was a joint production involving the MPE, the Montreal Planetarium and the Museum of Nature and Science of Sherbrooke, Quebec: the exhibition is now at The Johnson Geological Centre in St. John's, Newfoundland and will be there until April 30-07.

Following this, it will move to the Manitoba Museum in Winnipeg where it will stay until the end of 2008. It will then be housed in a museum in the town of Lethbridge during 2009.

In June 2009, the exhibition will have been travelling across Canada for eight years: a success that none of our partners have witnessed before with this type of exhibition!

---

## Membership Card

The MPE membership card is the most effective way to express your support of the Museum. It gives both moral and financial support to the project.

The membership card allows you to:

- Participate in the Annual General Assembly
- Vote and participate in making decisions that affect the future of the project
- Participate in activities, such as field trips, at a preferential rate

Attached to this Newsletter, you will find a copy of the Membership Form.

Don't forget.....you can always make a donation to the Museum, which will be very much appreciated, and for which you will receive a Tax Receipt, authorised by Revenue Canada.

---

## Board of Directors

**Mario Courmoyer — President**  
**Martin Dubreuil — Vice-President**  
**Sylviane L.D. Thibault — Secretary/Treasurer**  
**Luc Caron — Advisor**  
**Pierre Cardinal — Advisor**

## Our location

### Musée de Paléontologie et de l'Évolution

**541 de la Congrégation**  
**Montréal, Québec, Canada H3K 2J1**  
**Tel. : (514) 933-2422 Fax: (514) 933-4095**  
**Email : [paleovision@videotron.ca](mailto:paleovision@videotron.ca)**